



PLOT 3 THE PASTURES

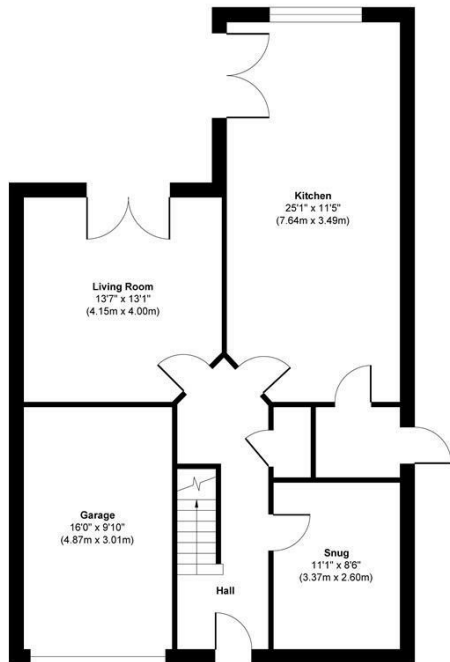
BATLEY, WF17 7BJ

£475,000
FREEHOLD

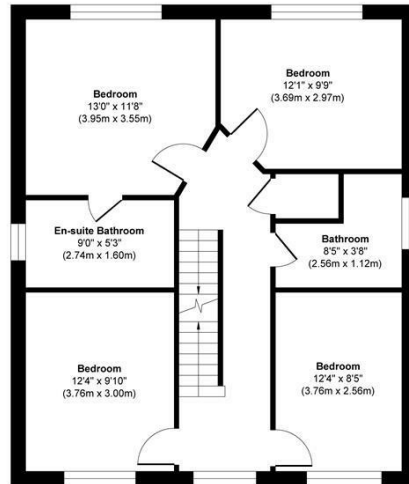
The Pastures is an exclusive collection of three exceptional homes, comprising two expertly converted semi-detached residences and one newly built detached property, thoughtfully created from the former Shoulder of Mutton pub. Bespoke options are available to early interests.

MONROE

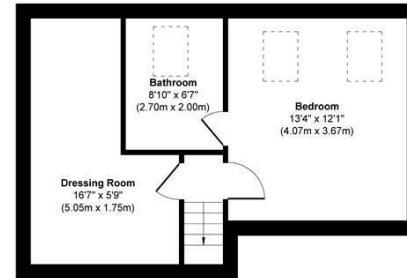
SELLERS OF THE FINEST HOMES



Ground Floor
Approximate Floor Area
887 sq. ft
(82.42 sq. m)



First Floor
Approximate Floor Area
749 sq. ft
(69.62 sq. m)



Second Floor
Approximate Floor Area
389 sq. ft
(34.36 sq. m)

Approx. Gross Internal Floor Area 2005 sq. ft / 186.40 sq. m

Illustration for identification purposes only, measurements are approximate, not to scale.
Copyright © Show Home.



Agents Note: Whilst every care has been taken to prepare these particulars, they are for guidance purposes only. All measurements are approximate and are for general guidance purposes only and whilst every care has been taken to ensure their accuracy, they should not be relied upon and potential buyers/tenants are advised to recheck the measurements

Land & New Homes
1-3 The Avenue
Alwoodley
Leeds
West Yorkshire
LS17 7BD

0113 350 1444
landandnewhomes@monroestateagents.com
www.monroestateagents.com

MONROE

SELLERS OF THE FINEST HOMES